



CALIFORNIA STATE UNIVERSITY  
**FULLERTON**<sup>™</sup>

---

# Health Center Facility Fee

Student Fee Advisory Committee Presentation

*Mary Becerra, Ed.D., MPH*

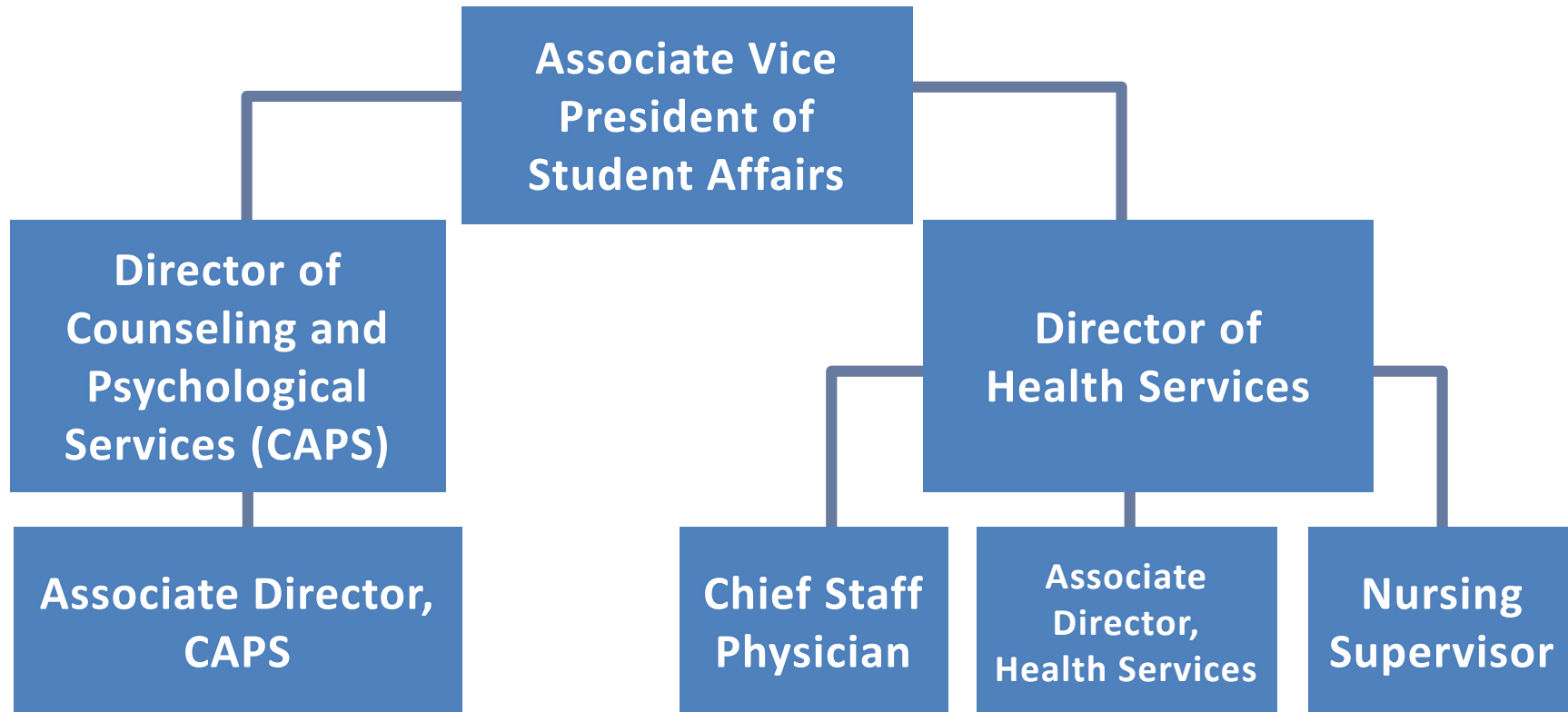
*Director, Health Services*

*December 10, 2021*

# Overview

- Governance
- History
- Purpose
- Revenues and Expenditures
- Questions

# Governance – Student Wellness Management Team

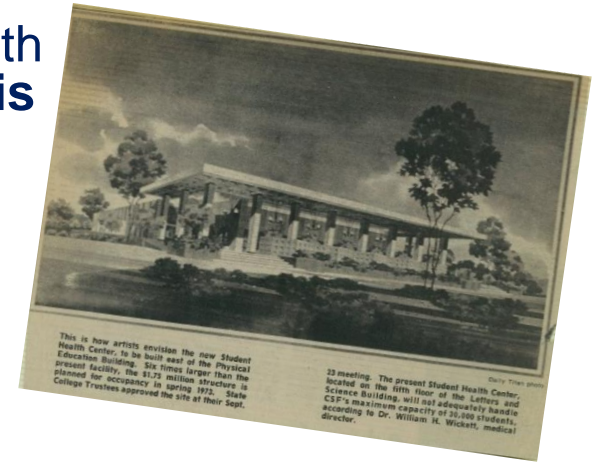


# Governance

- CSU Executive Order 943
- AAAHC (Accreditation Association of Ambulatory Health Care)
- SHAC (Student Health Advisory Committee)
  - *Students, Faculty, Staff*
- Management Team
  - *Associate Vice President, Wellness and Care Services*
  - *Director, Health Services*
  - *Associate Director, Administrative and Prevention Services*
  - *Director, Counseling and Psychological Services*
  - *Associate Director, CAPS*
  - *Chief Staff Physician, Health Services*
  - *Nursing Supervisor, Health Services*

# History

- Started Early **1970s** to pay for new building, at a cost \$1.75M
- \$3 per semester/\$6 per academic year baseline, with incremental increase each semester. **Current fee is \$3.33/semester.**
- The development and operation of health center facilities, on CSU campuses, has been authorized as a self-supporting program.
- Education Code statutory authority permits the trustees to establish a mandatory facility fee for the construction and maintenance of health center facilities.
- The statutes in the CSUBond Act of **1947** permit the Board of Trustees to use an established mandatory health center facility fee as a revenue source to repay bonds issued by the Trustees in order to fund the construction of health center facilities on CSU campuses.



# Purpose

- Facilities maintenance
- IT and infrastructure costs
- Building upgrades
- Repairs
- Equipment



# 2021 - 2022 System-wide Health Facilities Fee

Monterey Bay	\$0	San Luis Obispo	\$11
Bakersfield	\$6	Maritime	\$14
Channel Islands	\$6	Stanislaus	\$28
Chico	\$6	San Bernardino	\$29
Dominguez Hills	\$6	San Marcos	\$40
East Bay	\$6	Sonoma	\$42
Fresno	\$6	San Francisco	\$48
Los Angeles	\$6	Sacramento	\$50
Northridge	\$6	San Diego	\$50
Pomona	\$6	Humboldt	\$66
<b>Fullerton</b>	<b>\$7</b>	San José	\$70
Long Beach	\$10		

**Average: \$19.48**

***CSUF fee is approx. \$12 less than the average.***

# Revenue and Expenses 2019-2020

- Revenue
  - Summer 2020 \$ 26,669.66
  - Fall 2020 \$137,041.31
  - Spring 2021 \$131,121.57
  - Total Revenue \$294,832.54**
- Expenses
  - State Pro Rata \$ 15,600.00
  - Chancellor’s Office \$ 30,743.00
  - Other Expenses \$150,031.83
  - Total Expenses \$196,374.83**



# Upcoming Projects (2021-2022)

<b>Project</b>	<b>Est. Expense</b>
Titan Hall/CAPS Expansion	\$150,000 (in process)
Laboratory Renovation	\$750,000 (in process)
Office Renovations (SHCC-W)	\$100,000 (in process)
Computer/Software Upgrades	\$150,000 (in process)
Conference Room Reno (W)	\$100,000
Flooring Restoration (W)	\$500,000
SHCC-East Renovations	\$100,000
Exterior Paint (W)	\$50,000
<b>Total Projected Projects</b>	<b>\$1,900,000</b>

# Questions