



CALIFORNIA STATE UNIVERSITY  
**FULLERTON**<sup>™</sup>

---

# Student Health Fee 2018 - 2019

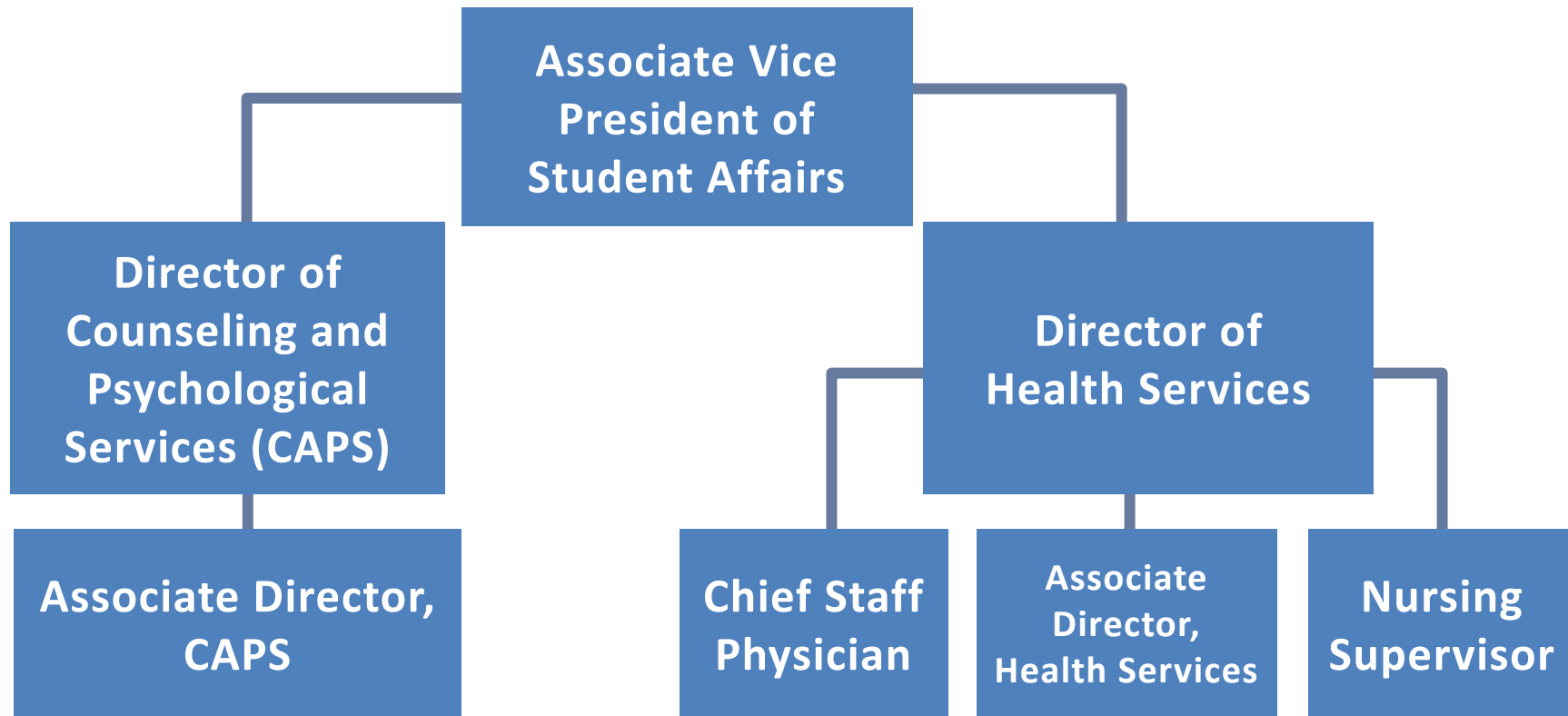
## Student Fee Advisory Committee Meeting

*Mary Becerra, Ed.D., MPH*  
*Director, Health Services*  
*February 28, 2020*

# Overview

- Governance
- History
  - Fee proposal Fall 2011
- Revenues and Expenditures
- Purpose and Accomplishments
- Upcoming Challenges

# Governance – Student Wellness Management Team



# Governance

- CSU Executive Order 943
- AAAHC (Accreditation Association of Ambulatory Health Care)
- SHAC (Student Health Advisory Committee)
  - *Students, Faculty, Staff*
- Management Team
  - *Associate Vice President, Wellness and Care Services*
  - *Director, Health Services*
  - *Associate Director, Administrative and Prevention Services*
  - *Director, Counseling and Psychological Services*
  - *Associate Director, CAPS*
  - *Chief Staff Physician, Health Services*
  - *Nursing Supervisor, Health Services*

# History



Nurse Couper

- The *Policy of the Board of Trustees on Student Health Services* was adopted initially as a comprehensive system-wide policy in **1977**.
- Revised in May **1988** and required that ***basic student health services*** be available to all regularly enrolled students at no additional charge.
  - Treatment for illnesses and injuries
  - Family planning services
  - Health education
  - Counseling for individual health problems
- In addition, the policy allowed campuses to offer additional elective, “augmented” services free of charge or for a fee.

*From 2001 Audit Report*

# More History

- In the **early 1990's**, a dramatic change to the fiscal climate prompted a reevaluation of the existing policy.
  - Several CSU campuses reported an inability to provide basic health services without additional revenue.
- Accordingly, in November **1992**, the Board of Trustees delegated to the Chancellor the authority to approve exceptions to the fee restrictions of the policy.
  - Such exceptions were permitted with the understanding that a task force would undertake a comprehensive review of the provision and financing of student health services.
- **In 1994**, CSUF students voted for a mandatory health fee of \$40 per year.
- **In 1997/98**, the fee was increased to \$50 per year.
- **In 2007/08**, the fee was increased to \$85, then \$90 through 2012.
- **In 2011**, CSUF students voted to establish a fee schedule with incremental increases once again.

# Fee Schedule from 2011 - present

Student Health Fee	Term/Year	Fee (annual)
	2011-2012	\$90
	2012-2013	\$142
	2013-2014	\$150
	2014-2015	\$158
	2015-2016	\$160
	2016-2017	\$160
	2017-2018	\$163
	2018-2019	\$168
	<b>2019-2010</b>	<b>\$174</b>

# Change in Fee Schedule

- **Fall 2011 – vote by student fee referendum**
- Increase fee from \$45/sem. to \$70/sem. (Fall 2012) and \$2 increments each semester for 5 semesters
- Fall 2019 - \$86.81/semester
- Recommended to evaluate health fee every 8-10 years
  - Changing needs of the campus
  - Student health status and needs
  - Increased costs of medical supplies, equipment and contracted services
  - Changes in employee salaries/benefits
  - Facility improvements/upgrades
  - Educational programming and prevention measures



# 2018 – 2019 System-wide Health Center Fee

Maritime	\$740	Pomona	\$262
Humboldt	\$666	Sacramento	\$252
San Luis Obispo	\$636	Fresno	\$226
Chico	\$492	Channel Islands	\$190
Sonoma	\$430	Monterey Bay	\$186
Stanislaus	\$400	<b>Fullerton</b>	<b>\$174</b>
East Bay	\$386	Dominguez Hills	\$150
San José	\$380	Long Beach	\$150
San Marcos	\$326	Northridge	\$150
Bakersfield	\$326		
San Francisco	\$314		
San Diego	\$300		
Los Angeles	\$277		
San Bernardino	\$268		

**Average: \$334**

*CSUF fee is almost two times less than the average.*

# Revenue and Expenses

- Revenue (Health Fee)
  - Summer 2018 (\$81.44) \$ 661,252.19
  - Fall 2018 (\$84.45) \$3,340,812.93
  - Spring 2019 (\$84.45) \$3,277,589.16
  - **Total SHC fees collected** **\$7,279,654.28**
- Expenses
  - Salaries and Benefits \$8,516,537.10
  - Supplies, services, programming \$1,202,434.15
  - **Total Expenses** **\$10,213,270.20**

# Purpose

- Increased Demand, especially in crisis services
- Increased Severity
- Barrier to Access in the Community/Cost
- Training for Faculty, Staff & Students
- Campus Resource for a Safer Campus Community

# Basic and Augmented Services

- Primary Care Medical Visits
- Radiology
- Pharmacy
- Family PACT Family Planning Services
- Laboratory Services
- Immunization Services
- Counseling
- Psychiatry
- Physical Therapy
- Orthopedics and Sports Specialist
- Chiropractic
- Acupuncture
- Optometry
- Walk-In Care
- Prevention and Educational Programming

# 2018-2019 Visit Summary

<b>SERVICE</b>	<b># APPOINTMENTS</b>	<b>DEPARTMENT</b>	<b># STUDENTS SERVED</b>
ACUPUNCTURE	90		
CAPS	8,424	CAPS	2,460
CAPS Crisis	681		
CHIROPRACTOR	3,227		
FAMILY PACT	1,911		
NURSING	7,917	Health Services	17,030
OPTOMETRY	50		
ORTHOPEDICS	203		
PHYSICAL THERAPY			
SPORTS REHABILITATION	3,829		
PRIMARY CARE	14,163		
PSYCHIATRY	1,500		
TITANWELL (CLINICAL APPOINTMENTS ONLY)	348		
<b>GRAND TOTAL:</b>	<b>42,343</b>	<b>GRAND TOTAL:</b>	<b>19,490</b>

# Health Services (2018 – 2019 statistics)

- Accredited by AAAHC through January 2021
- Approximately 40 professional staff
- Over 14,000 primary care appointments
- Prestigious physical therapy and sports rehab program
- Contracted services include optometry, chiropractic, orthopedic, acupuncture
- Well Fest annual screening and open house saw over 100 participants
- Provided approximately 1,400 flu vaccines to students

# CAPS (2018 – 2019 statistics)

- 6 % of the CSUF student body used services at CAPS
- Provided 8,424 counseling and 1,500 psychiatric appointments which were utilized by 2,460 students
- Each semester, CAPS offered 6 weekly psychotherapy groups to provide students with added counseling support
- Case Management was provided for 184 students with 391 case management appointments
- Participated in 363 Outreach Events, serving 5,996 students
- 396 students attended 5 different kinds of wellness workshops
- Daily Walk-in/Crisis: 681 appointments used by 566 students
- Counselors at Irvine Center and LH Building
- 17 full time counselors - 1:2,340 (counselor/student ratio)

# Titan Well (2018-2019 statistics)

- New student-centered learning approaches; follow-up behavioral outcome assessment; and social marketing interventions.
- 5 Certified Health Education Specialists and Registered Dietitian – 351 hours of one-on-one consultation
- 19 Certified Peer Educators with 30,402 total student interactions
- Titan Well Hut saw 20,059 interactions
- 28,833 safer sex items distributed
- 950 student visits to Animal Therapy
- 686 students reached in First Year Experience courses
- 96% of Fraternity and Sorority members said they would seek help if a peer show signs of alcohol poisoning
- Targeted sports nutrition and eating disorder awareness education was also provided in new partnership with Athletics and the Department of Theatre and Dance.



# Accomplishments in 2018-2019

- Increased utilization of CAPS Crisis protocol
- Increased psychiatric services
- Increased utilization of after hours 24/7 call service – ProtoCall
- Increased utilization of Titan Hut
- Increased utilization of flu vaccine clinic
- Increased partnership with ASI, Basic Needs Center, and Emergency Preparedness of campus

# Looking ahead to 2019 - 2020

- Spending \$2,700,000 on increased staffing and programming for mental health services
- Increasing Health Services utilization through additional \$1,000,000 on new personnel
- Compliance with new immunization mandates
- Mental health and prevention awards
  - You@Fullerton, additional anxiety screenings, new therapy groups
- On-going facility improvements
- Piloting experiential, cooking-based food literacy classes
- Release of an Animal Magic Films documentary highlighting our Animal Therapy and animals as mediators of student stress and quality of life

**Questions?**