

Health Facilities Fee

“Providing the Services and Support to Achieve Your Highest Potential”

STUDENT WELLNESS

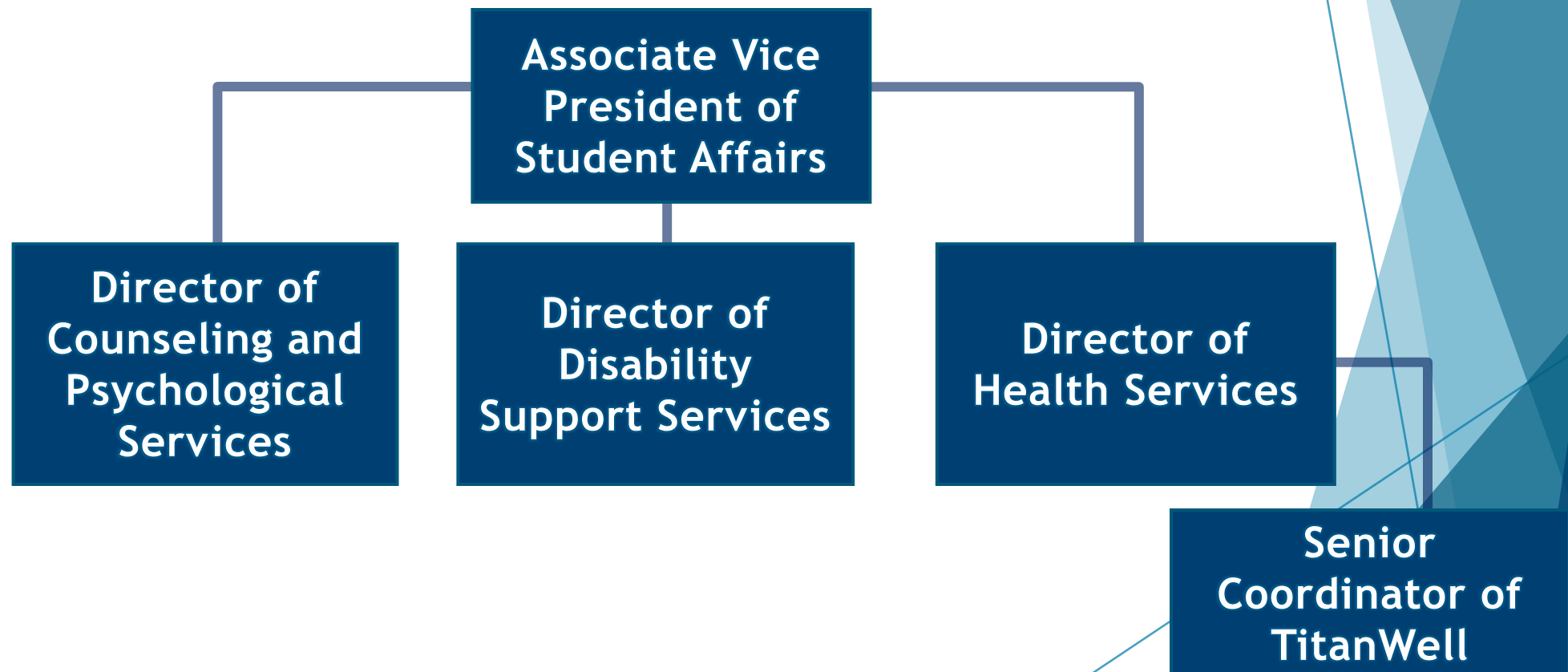
December 7, 2018
Dr. Mary Becerra, Acting Director
Student Health Services, CSUF

Overview

- Governance
- History
- Purpose
- Revenues and Expenditures
- Questions

Governance

Student Wellness - Management Team



Governance

➤ Management Team

- Director of Health Services
- Director of Counseling and Psychological Services
- Director of Disability Support Services
- Senior Coordinator TitanWell

➤ SHAC (Student Health Advisory Committee)

- Students
- Faculty
- Staff

History

- Started Early **1970s** to pay for new building
- Cost \$1.75 Million
- \$3 per semester/\$6 per academic year
- Has never increased
- The development and operation of health center facilities, on CSU campuses, has been authorized as a self-supporting program.
- Education Code statutory authority permits the trustees to establish a mandatory facility fee for the construction and maintenance of health center facilities.
- The statutes in the CSUBond Act of **1947** permit the Board of Trustees to use an established mandatory health center facility fee as a revenue source to repay bonds issued by the Trustees in order to fund the construction of health center facilities on CSU campuses.



Purpose

- Building upgrades
- Repairs
- Equipment
- Physical plant work orders
- IT and infrastructure costs



2016-17 System-wide Health Facilities Fee

Monterey Bay	\$0	Long Beach	\$10
Bakersfield	\$6	San Luis Obispo	\$10
Channel Islands	\$6	Maritime	\$14
Chico	\$6	Stanislaus	\$22
Dominguez Hills	\$6	San Bernardino	\$27
East Bay	\$6	Humboldt	\$36
Fresno	\$6	Sonoma	\$38
Fullerton	\$6.32	San Marcos	\$40
Los Angeles	\$6	Sacramento	\$46
Northridge	\$6	San Diego	\$50
Pomona	\$6	San José	\$68
San Francisco	\$6		

Average: \$16

CSUF fee is about \$12 less than the average.

Revenue & Expenses

2018-2019

➤ Estimated Budget:

Revenue:

\$3/semester	80,793 students	\$242,379
--------------	-----------------	-----------

Expenses:

State Pro Rata	\$14,085
----------------	----------

Chancellor's Office	<u>\$30,000</u>
---------------------	-----------------

Total:	\$198,294
---------------	------------------

- The greatest portion of the State Pro Rata, which is the health benefits costs, is passed on to campuses based on what retirement expenses were recorded two fiscal years ago.

Grand Re-Opening: Spring 2018



Questions?