

February 22, 2018

Dr. Richard Boucher, Interim Director / Chief Staff Physician  
Student Health Services, CSUF

# HEALTH FACILITIES FEE

*“Providing the Services and Support to Achieve Your Highest Potential”*

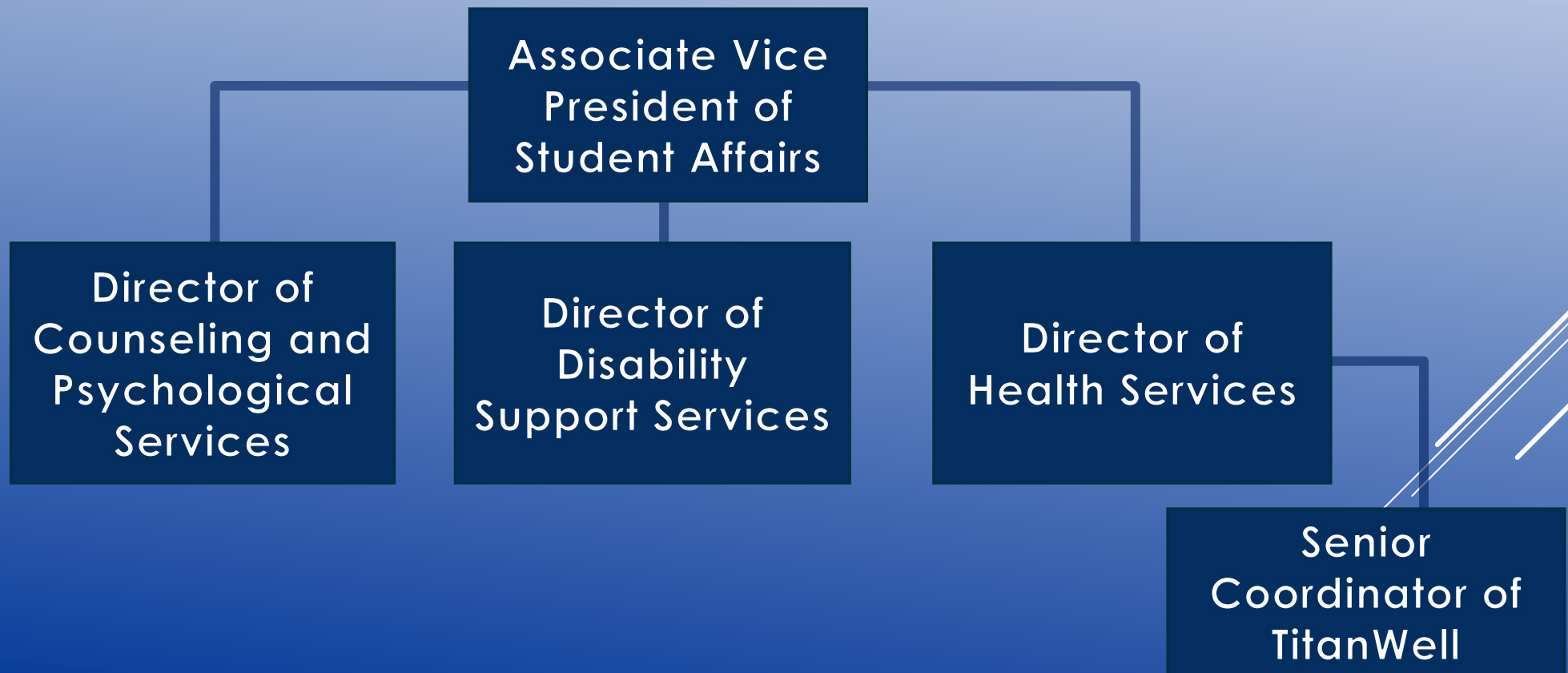
**STUDENT WELLNESS**

# OVERVIEW

- **Governance**
  - **History**
  - **Purpose**
  - **Revenues and Expenditures**
  - **Questions**
- 

# GOVERNANCE

## Student Wellness – Management Team




# GOVERNANCE

## ➤ **Management Team**

- Director of Health Services
- Director of Counseling and Psychological Services
- Director of Disability Support Services
- Senior Coordinator TitanWell

## ➤ **SHAC (Student Health Advisory Committee)**

- Students
  - Faculty
  - Staff
- 
- A decorative graphic consisting of several parallel white lines of varying lengths, slanted diagonally from the bottom right towards the top right, set against a blue gradient background.

# HISTORY

- Started Early **1970s** to pay for new building
- Cost \$1.75 Million
- \$3 per semester/\$6 per academic year
- Has never increased
- The development and operation of health center facilities, on CSU campuses, has been authorized as a self-supporting program.
- Education Code statutory authority permits the trustees to establish a mandatory facility fee for the construction and maintenance of health center facilities.
- The statutes in the CSUBond Act of **1947** permit the Board of Trustees to use an established mandatory health center facility fee as a revenue source to repay bonds issued by the Trustees in order to fund the construction of health center facilities on CSU campuses.



# PURPOSE

- Building upgrades
- Repairs
- Equipment
- Physical plant orders
- IT and infrastructure costs



# CSU HEALTH FACILITIES FEE

## 2016-17 System-wide Health Facilities Fee

Monterey Bay	\$0	San Francisco	\$6
Bakersfield	\$6	Los Angeles	\$8
Channel Islands	\$6	San Luis Obispo	\$10
Chico	\$6	Stanislaus	\$18
Dominguez Hills	\$6	Maritime	\$21
East Bay	\$6	San Bernardino	\$26
Fresno	\$6	Sonoma	\$34
<b>Fullerton</b>	<b>\$6</b>	Sacramento	\$44
Humboldt	\$6	San Diego	\$50
Long Beach	\$6	San Marcos	\$50
Northridge	\$6	San José	\$118
Pomona	\$6		

**Average: \$20**

**CSUF fee is \$14 less than the average.**

# REVENUE & EXPENSES

## FALL 2017

➤ Estimated Budget:

Revenue:

\$3/semester	40,439 students	\$122,784
--------------	-----------------	-----------

Expenses:

State Pro Rata	\$4,695*
----------------	----------

Chancellor's Office	<u>\$10,000*</u>
---------------------	------------------

<b>Total:</b>	<b>\$108,089</b>
---------------	------------------

- The greatest portion of the State Pro Rata, which is the health benefits costs, is passed on to campuses based on what retirement expenses were recorded two fiscal years ago.













**QUESTIONS?**

