



CALIFORNIA STATE UNIVERSITY
FULLERTON[™]

2024 Fire Safety Report

Fire Safety Report

The Higher Education Opportunity Act enacted on August 14, 2008, requires institutions that maintain on-campus student housing facilities to publish an annual fire safety report that contains information about campus fire safety practices and standards of the institution. The following report details all information required by this act for the CSU Fullerton campus.

DEFINITIONS

The following terms are used within this report. Definitions have been obtained from the Higher Education Opportunity Act.

On-Campus Student Housing - A student housing facility that is owned or controlled by the institution, or is located on property that is owned or controlled by the institution, and is within a reasonable contiguous area that makes up the campus.

Fire - Any instance of open flame or other burning in a place not intended to contain the burning or in an uncontrolled manner.

TO REPORT A FIRE

Although any fire can be reported by a student to any University official, all students and employees at Cal State Fullerton should contact a University Police Dispatcher at 9-1-1 to report all fires, fire related emergencies or smell of smoke. The nearest fire alarm may be activated or the emergency blue-light phones can be used.

Intentional misuse of the 911 phone number, blue light, and/or fire alarm pull stations or tampering with safety equipment is prohibited and is a serious crime, and is subject to criminal charges. Additionally, individuals and/or residential communities may be held financially responsible for charges related to non-emergency fire alarm activation and building evacuation. False alarms are a danger to all. All campus personnel need to help in deterring false alarms.

The reporting of fires in any campus structure is required. Students, faculty or staff must all ensure that a University Police Dispatcher is notified for any fire for the purposes of the Annual Fire Safety Report.

COMMUNITY RESPONSE TO A FIRE

Fires in Campus Buildings

Remember to R.A.C.E.:

- Remove those in danger.
- Announce: pull alarm and call 911.
- Contain fire by closing doors.
- Extinguish if safe to do so, or evacuate horizontally beyond fire doors or vertically, if necessary.

All fires, no matter how small, must be reported. When you call 911, the dispatcher will simultaneously notify the fire department and the police department.

Minor Fire

Small, contained, **NOT in danger** of spreading or exploding.

- Call 911
- Before opening any door, use the back of hand to see if it is hot – if the door is hot, leave it closed. If the door is not hot, open it slowly and be prepared to close it quickly if necessary.
- If you are familiar with the use of a fire extinguisher, attempt to put out the fire.
- **DO NOT use water on an electrical fire.**
- **DO NOT use water on a burning liquid or a grease fire.**
- Never allow the fire to come between you and an exit.
- Watch for smoldering or flare up.
- Notify the professional staff member on duty who will document the incident.

Medium Fire

Small, but **in danger** of spreading or exploding.

- Call 911
- Before opening any door, use the back of your hand to see if it is hot-if the door is hot, leave it closed. If the door is not hot, open it slowly and be prepared to close it quickly if necessary.
- If possible, without risking your personal safety or the safety of others, contain the spread of the fire with a fire extinguisher.
- Close fire doors and windows.
- Never allow the fire to come between you and an exit.
- Evacuate the building; bring warm (and possibly rain-resistant) clothing and shoes.
- Exit the building quickly, knocking on others' doors as you go (not waiting for a response, but making residents aware of fire danger). Carry a towel or blanket to protect you from flames and smoke.
- If you see or smell smoke in a hall or stairway, use another exit.
- Proceed to your assigned Emergency Assembly Point.

Major Fire

Large, rapidly spreading or totally out of control.

- Call 911
- Evacuate the building immediately. If smoke is thick, it is advisable to crawl close to the floor toward emergency exits.
- Before opening any door, use the back of your hand to see if it is hot – if the door is hot, leave it closed. If the door is not hot, open it slowly and be prepared to close it quickly if necessary.
- Evacuate the building; bring warm (and possibly rain-resistant) clothing and shoes.
- Exit the building quickly, knocking on others' doors as you go (not waiting for a response, but making residents aware of fire danger), carry a towel or blanket to protect you from flames and smoke.
- Never allow the fire to come between you and an exit. If you see or smell smoke in a hall or stairway, use another exit.
- Close doors behind you to confine the fire. DO NOT lock doors. Note: If a door is already closed and hot to the touch, leave it closed. Stuff towels or clothes at the base of the door to seal any cracks surrounding the door opening. Alert someone to your location by whatever means available. Open your window only as necessary to avoid smoke or to alert someone to your location.
- Do not attempt to save possessions at the risk of personal injury.
- Proceed to your assigned Emergency Assembly Points.
- Follow all directions given to you by emergency response personnel.
- Do not return to the fire or emergency area until you are instructed to do so.

EMERGENCY NOTIFICATIONS FOR FIRE INCIDENTS

In the event of a fire, the fire alarm will notify any building occupants. However, Cal State Fullerton may follow the same notification policy for fires that it does for criminal incidents. Upon confirmation of a significant emergency, Cal State Fullerton will, without delay, take into account the safety of the community, determine the content of the notification and initiate the emergency notification system community-wide, unless issuing a notification will, in the professional judgment of responsible authorities, compromise efforts to assist a victim or to contain, respond to, or otherwise mitigate the emergency. However, emergencies can be concentrated to an area; therefore, emergency notifications can be tailored exclusively to the segment of the campus at risk. Authorized personnel shall determine how much information is appropriate to disseminate at different points in time in consultation with the Chief of Police, or designee. The content of each notification, which will include community response instructions if warranted, is incumbent upon what segments of the community the notification targets and the nature of the emergency. In such instances, the University will continue an assessment of the situation and additional segments of the campus community will be notified if a situation warrants such action. Specific instructions for use of notification systems are provided in the Emergency Operations Center (EOC) and EOC Communications Room.

The following authorized personnel have the authority to activate emergency notifications in the event of an emergency/hazardous condition, natural disaster or other critical incident:

- University President
- Vice President for Administration & Finance
- Chief of Police
- Provost and Vice President for Academic Affairs
- Emergency Manager
- Police Watch Commanders
- University Public Information Officer
- Vice President for Student Affairs
- Senior Associate Vice President for Student Affairs/Dean of Students
- Executive Director, Housing and Residential Engagement

FIRE SAFETY POLICIES FOR CSU FULLERTON STUDENT HOUSING

In compliance with fire safety standards, electrical cooking appliances with external heating elements or that produce large amounts of steam are not permitted (i.e. toasters, coffee pots, rice cookers, grills, Instant Pots etc.). Space heaters and sun lamps are not permitted. The only microwaves approved in student rooms are those included in the “MicroFridge” (refrigerator/freezer/microwave) units rented by the approved campus vendor. “MicroFridge” units must be plugged directly into the wall receptacle.

Use of multi-plug adapters such as cube adapters, unfused plug strips, extension cords, or any other device not complying with the California Electrical Code are prohibited.

Other prohibited appliances include portable air conditioning units and humidifiers.

Any tampering with fire detection systems, fire alarms, or fire-fighting equipment is prohibited. This includes alarms, fire extinguishers, fire hoses, heat and smoke detectors, sprinkler systems, fire escapes, smoke/fire doors, exit signs, and audible/visual devices. All students are required to follow fire evacuation procedures. This includes evacuating whenever an alarm is sounded regardless of whether the alarm is related to a scheduled drill or not. Tampering with fire safety equipment or sounding false fire alarms is punishable by up to 6 months in jail and/or a \$500.00 fine. Smoke detectors must remain in place and operable at all times.

Burning candles is prohibited in all Housing and Residential Engagement facilities. Open flames are only allowed in apartment kitchens. Items that require an open flame to operate (e.g., Bunsen burners; candles, including decorative; oil burners; alcohol burners; lighters; matches) are not allowed in any Housing and Residential Engagement facility (excluding the Gastronome). Burning of incense and herbs is also prohibited.

Smoking and vaping are prohibited in all interior and exterior campus areas.

FIRE SAFETY EDUCATION AND TRAINING

Community Coordinators (CCs) and Resident Advisors (RAs) are trained on how to address and react to emergency situations including emergency equipment identification, such as AEDs, fire extinguishers, and blue phones. Community Coordinators and Resident Advisors are also trained on how to recognize and best support students who may be in emergency or crisis situations including medical or facilities related situations.

PLANS FOR FUTURE IMPROVEMENTS IN FIRE SAFETY

Upgrades to fire safety equipment and installation are reviewed annually by the Housing and Residential Engagement staff and the State Fire Marshal as needed. There are no plans for future improvements during the next year.



EMERGENCY AND EVACUATION PROCEDURES

EMERGENCY PROCEDURES

California State University, Fullerton
Housing and Residential Engagement

EVACUATION INFORMATION

- Evacuate the building using the nearest exit or alternate if nearest exit is blocked.
- Do not use elevators!
- If you're able, take personal belongings such as your phone, keys, shoes, wallet/purse, and your emergency go-kit.
- Follow directions given by Resident Advisors, other Housing and Residential Engagement Staff, or campus emergency officials.
- Go to your designated evacuation area (see map below).
- If possible, assist persons with disabilities or special needs.

EARTHQUAKE

- Drop, Cover, and Hold under a table or desk or against an inside wall until the shaking stops.
- After shaking stops, check yourself and others for injuries and move toward the nearest accessible exit.
- Leave the building and move to your designated evacuation area (see map below).
- Do not leave the area/campus without reporting your status to your Resident Advisor or other Housing and Residential Engagement staff.

FIRE

- Follow directions give by Resident Advisors, other Housing and Residential Engagement staff, or campus emergency officials.
- Evacuate the building and do not re-enter until authorized to do so by emergency personnel.

POWER OUTAGE

- Remain calm. Provide assistance to others if necessary.
- Move cautiously and retrieve a flashlight. Proceed to a lighted area. Exits will be indicated with lighted signs if emergency power is operating.

SUSPICIOUS PERSON

- Do not physically confront the person.
- Do not let anyone into a locked building, apartment, or office.
- Do not block the person's access to an exit.
- Call 911 or the University Police Department at (657) 278-2515. Provide as much detail as possible about the person and their direction of travel.

SUSPICIOUS OBJECT

- Do not touch or disturb the object.
- Call 911 or the University Police Department at (657) 278-2515.
- Notify your Resident Advisor or other Housing and Residence Life Staff.
- Be prepared to evacuate.

HAZARDOUS MATERIALS RELEASE

- If an emergency occurs or if anyone is in danger, call 911 or the University Police Department at (657) 278-2515.
- Move away from hazardous site to a safe location. Follow directions given by emergency personnel or Housing and Residential Engagement staff.
- Alert others to stay clear of the area.
- Notify emergency personnel or Housing and Residential Engagement staff if you've been exposed or have information about the release.

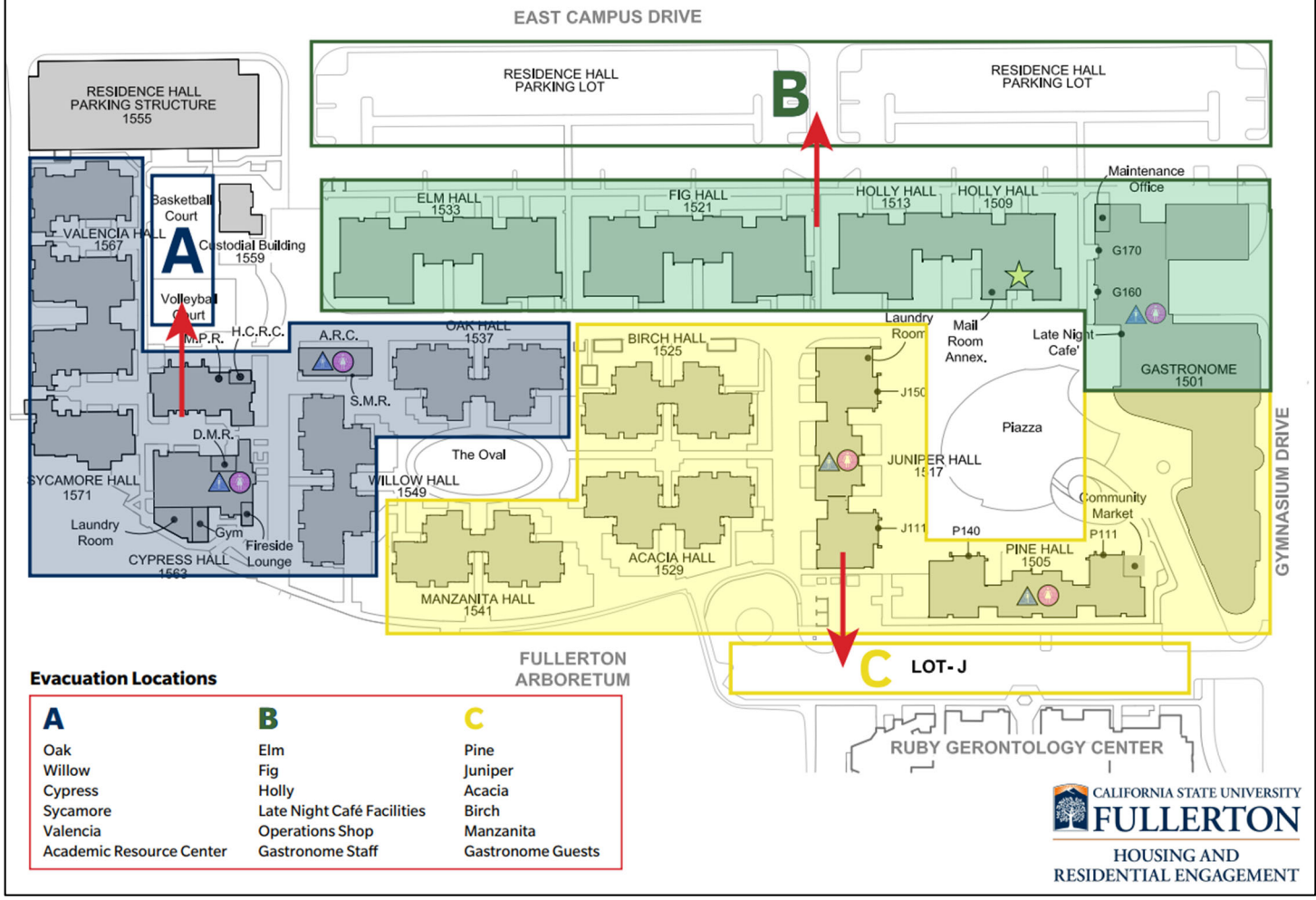
SHELTER IN PLACE

- Stay in the building. Close and lock windows and doors.
- Move to an interior room or space away from as many windows as possible. It may be necessary to move to a higher or lower floor and into a hallway.
- Do not use elevators.
- Follow directions given by emergency personnel or Housing and Residential Engagement staff.
- Remain in the shelter until emergency personnel or Housing and Residential Engagement Staff notify you that it's safe to leave.
- Do not contact parents or friends to come to campus to pick you up.

For any questions or concerns, please call the Housing Office at (657) 278-2168. For assistance after hours, call the RA on Duty at (714) 681-6918.

EMERGENCY AND EVACUATION PROCEDURES (CONT.)

Housing Evacuation Map



CSU Fullerton Student Housing Facilities Fire Safety Systems

A majority of University buildings are equipped with automatic smoke detection and alarm systems which are constantly monitored by the University Police Department 24 hours a day. Refer to the chart below to review the Fire Safety Amenities in the Cal State Fullerton student housing facilities for information about fire detection, notification, and suppression systems in each residential facility.

Student Housing Facilities	Fire Alarm Monitoring	Sprinkler System	Smoke Detection	Fire Extinguisher Devices	Evacuation Plan	# of Evacuation (Fire) Drills		
						2021*	2022*	2023
Fullerton Campus								
ACACIA	X	X	X	X	X	0	0	1
BIRCH	X	X	X	X	X	0	0	1
CYPRESS	X	X	X	X	X	0	0	0
ELM	X	X	X	X	X	0	0	1
FIG	X	X	X	X	X	0	0	1
HOLLY	X	X	X	X	X	0	0	1
JUNIPER	X	X	X	X	X	0	0	1
LAUREL	X	X	X	X	X	0	0	1
MANZANITA	X	X	X	X	X	0	0	1
NOBLE	X	X	X	X	X	0	0	1
OAK	X	X	X	X	X	0	0	1
PINE	X	X	X	X	X	0	0	1
REDWOOD	X	X	X	X	X	0	0	1
SYCAMORE	X	X	X	X	X	0	0	0
VALENCIA	X	X	X	X	X	0	0	0
WILLOW	X	X	X	X	X	0	0	1

* No formal evacuation (fire) drills were conducted due to COVID-19 safety protocols.

Student Housing Mailing Addresses

Building Name	Building Address	Building Name	Building Address
Redwood Hall	1451 East Campus Drive	Acacia Hall	1529 East Campus Drive
Noble Hall	1455 East Campus Drive	Elm Hall	1533 East Campus Drive
Laurel Hall	1459 East Campus Drive	Oak Hall	1537 East Campus Drive
Pine Hall	1505 East Campus Drive	Manzanita Hall	1541 East Campus Drive
Holly Hall	1513 East Campus Drive	Willow Hall	1549 East Campus Drive
Juniper Hall	1517 East Campus Drive	Cypress Hall	1563 East Campus Drive
Fig Hall	1521 East Campus Drive	Valencia Hall	1567 East Campus Drive
Birch Hall	1525 East Campus Drive	Sycamore Hall	1571 East Campus Drive

COMPILING FIRE STATISTICS

The statistics listed provide an overall picture of fires occurring in each on-campus student residential facilities from January 1 to December 31 for 2021, 2022, and 2023. This report meets all reporting requirements as set forth in 34 C.F.R § 668.49. Fire statistics are updated by October 1 of each year.

It is the University’s policy to ensure that fires on campus are reported and investigated for determination by a fire authority (e.g. fire marshal).

For each fire, Cal State Fullerton is required to disclose the following information:

- the cause of the fire
- the number of persons who received fire-related injuries that resulted in treatment at a medical facility
- the number of deaths related to that fire
- the value of property damage related to that fire

In addition to on-campus student residential housing facilities, Cal State Fullerton is required to disclose a description of each on-campus student housing facility’s fire safety system.

Fire statistics concerning this campus and others can also be found on the Department of Education website. The statistics below are being provided as part of Cal State Fullerton’s commitment to safety and security of our campus and facilities, and to comply with federal law.

CSU Fullerton Student Housing Fire Statistics

Student Housing Facilities	Total Fires in Each Building			Cause of Fire			# of Injuries That Required Medical			# of Deaths Related to Fire			Value of Property Damage		
	2021	2022	2023	2021	2022	2023	2021	2022	2023	2021	2022	2023	2021	2022	2023
ACACIA	0	0	0	0	0	0	0	0	0	0	0	0	\$0	\$0	\$0
BIRCH	0	0	0	0	0	0	0	0	0	0	0	0	\$0	\$0	\$0
CYPRESS	0	0	0	0	0	0	0	0	0	0	0	0	\$0	\$0	\$0
ELM	0	0	0	0	0	0	0	0	0	0	0	0	\$0	\$0	\$0
FIG	0	0	0	0	0	0	0	0	0	0	0	0	\$0	\$0	\$0
HOLLY	0	1	0	0	I/S	0	0	0	0	0	0	0	\$0	\$12K	\$0
HOLLY	0	1	0	0	I/S	0	0	0	0	0	0	0	\$0	\$12K	\$0
HOLLY	0	1	0	0	I/S	0	0	0	0	0	0	0	\$0	\$12K	\$0
JUNIPER	0	0	0	0	0	0	0	0	0	0	0	0	\$0	\$0	\$0
MANZANITA	0	0	0	0	0	0	0	0	0	0	0	0	\$0	\$0	\$0
LAUREL	0	0	0	0	0	0	0	0	0	0	0	0	\$0	\$0	\$0
NOBLE	0	0	0	0	0	0	0	0	0	0	0	0	\$0	\$0	\$0
OAK	0	0	0	0	0	0	0	0	0	0	0	0	\$0	\$0	\$0
PINE	0	0	0	0	0	0	0	0	0	0	0	0	\$0	\$0	\$0
REDWOOD	0	0	0	0	0	0	0	0	0	0	0	0	\$0	\$0	\$0
SYCAMORE	0	0	0	0	0	0	0	0	0	0	0	0	\$0	\$0	\$0
VALENCIA	0	0	0	0	0	0	0	0	0	0	0	0	\$0	\$0	\$0
WILLOW	0	0	0	0	0	0	0	0	0	0	0	0	\$0	\$0	\$0

Cause of Fire Legend:

U - Unintentional; I - Intentional; D - Undetermined

C- Cooking; S- Smoking Materials, F- Open Flame; E- Electrical; HP - Hazardous Products; HE - Heating Equipment;
M - Machinery /Industrial; N - Natural; O - Other