

CSUF TECHNOLOGY GUIDE

A whimsical, hand-drawn illustration of a landscape. In the foreground, a small orange car with a blue wing-like structure on the back sits on a green field. A simple robot with a grey head, two orange antennae, and two orange arms stands on the roof of the car. In the middle ground, a yellow flying car with a red propeller and a smiling face flies across the sky, leaving a white trail. The background features rolling green hills, a blue sky with white clouds, and two planets: one with a yellow ring and another with a blue ring. A dashed orange line with an arrow at the end starts near the top left and loops around the word 'TECHNOLOGY'.

CSUF

Information
Technology Services

ACADEMIC AFFAIRS



CEDA

Center for Equitable Digital Access



This center supports campus efforts to bridge the digital divide for all students by ensuring access to a device through the TitanWare program.

CEDA is located on the 2nd floor of Pollak Library North, where a wide range of technology resources is available, including the Data Visualization Center, Digital Print Services, Innovation/Makerspace, and the Interdisciplinary College Collaboration Space.

Visit [CEDA.fullerton.edu](https://ceda.fullerton.edu) for more information.

TITANWARE

YOU *NEED* A LAPTOP



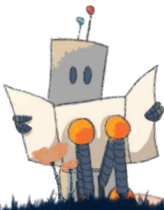
TitanWare is Cal State Fullerton's comprehensive technology ecosystem designed to advance student success.

Many faculty expect students to bring a laptop to class every day to leverage our technology-infused teaching & learning ecosystem in and out of the classroom.

Laptops for Student Success

Students have the following options to acquire a laptop:

- Use a laptop they currently own
- Purchase from the Titan Shops at a discounted price and with payment plan options
- Purchase their own laptop
- Borrow a laptop from campus
 - Long-term (semester)
 - Short-term (48hrs)



TitanWare resources include:

- Tech Tools
- Available Software
- Innovation labs with AR/VR
- Campus ID Card
- Digital Print Services
- Help Desk Support
- Wi-Fi
- Cybersecurity
- Computer Labs and Printing
- And MORE!



DATA VISUALIZATION CENTER

The Data Visualization Center offers data experts an immersive space to analyze and display data in an innovative and meaningful way. The high-tech center is equipped with all of the tools needed in order to handle large data sets.

For hours and more information, visit
it.fullerton.edu/services/data_visualization_center





INNOVATION/ MAKERSPACE CENTER



The Innovation/Makerspace Center is located on second floor of Pollak Library North (PLN-215). This center has been created to fulfill creativity, innovation and talent through advanced technology such as virtual reality, 3D printing, Microsoft Surface Hub, and high-end computing.



For more information visit it.fullerton.edu/innovation_makerspace_center/



INTERDISCIPLINARY COLLEGE COLLABORATION SPACE

Located on the 2nd floor of Pollak Library North, the Interdisciplinary College Collaboration Space is an area for students to utilize the technology they need for their majors.

This space gives students the unique opportunity to work outside of the classroom and gain insight from their peers. The lab provides specialized software for student access allowing collaboration between colleges in one space.

Campus Computer Labs

Computers and laptop docking stations are available on the first, second, and fourth floors of Pollak Library, North.

Visit it.fullerton.edu/students/computerlabs for more information.

dps DIGITAL PRINT SERVICES

Digital Print Services (DPS) helps the CSUF campus community (students, staff, faculty and guests) with their day-to-day printing needs. We have a full service shop with professional state-of-the-art technology/equipment and knowledgeable, friendly staff who can help you print poster boards, brochures, business cards, booklets, newsletters, invitations, wide 3D prints, and much more.



Email: DPS@fullerton.edu

Call: 657.278.3964

For more information visit it.fullerton.edu/dps

PRINTERS, COPIERS & SCANNERS

Printers

The Campus has black & white, color, wireless and even 3D printing options. Some labs are restricted to students within the college or the program.

Students may also take advantage of wireless printing. There are several wireless printing locations in Pollak Library and one in the TSU.

Copiers

If you need to copy a document, you can find machines in Pollak Library.

Scanners

Scanning services are available at Digital Print Services in Pollak Library.

For detailed locations and more information visit sts.fullerton.edu/printing

TITANCARD

TitanCard is the official multi-functional identification card issued by the University to students, faculty and staff. It can be used to:

- Check out library materials
- Receive discounts on campus and in the community (movie theaters, etc.)
- Reserve study rooms
- Gain admittance to campus-activities and games
- Access campus computer labs
- Rent textbooks from Titan Shops
- Housing door access

All students, faculty and staff are eligible for a TitanCard. Fill out an application at fullerton.edu/id.

Acceptable forms of identification include:

- Driver's License
- Passport
- State Identification Card
- School Identification Card



Students, faculty and staff can use their TitanCard as a payment card at the following campus locations:

- Brief Stop
- Carl's Jr
- Digital Print Services
- Food Court
- Starbucks
- The Gastronome
- The Yum
- Titan Shops

Add money to your TitanCard online:

- On your Student Portal through TitanTender (Note: There is a credit card processing fee when adding money online through your Portal)

For more information, visit it.fullerton.edu/titancard

CSUF PORTAL

Use your CSUF Portal to view your Portal Homepage, navigate to Canvas, see your textbooks and more.

You can also

- Check your email and alerts
- Customize your quick links
- Explore different apps and links such as: Career Center, Drop-box, Software, Online IT Help, Titan Direct Access, and more
- Use the search box to find specific apps and classes
- Customize your widgets

DUO

Don't get locked out of the Portal! All CSUF users are required to use DUO Two-Factor Authentication (2FA). **Download the DUO app** on your mobile device and complete the set up. To change devices or update your settings, visit

my.fullerton.edu/accounts/csufduomfa

Canvas

CSUF's Official Learning Management System (LMS)



Courses

Published Courses

[Canvas Support Resources](#)
Default Term

Unpublished Courses

All Courses

Welcome to your courses! To customize the list of courses, click on the "All Courses" link and star the courses to display.

Locate your courses, view your calendar, send and receive messages, and get Canvas support.

You have access to 24/7 Canvas Support, on-demand resources and guides.



ON CAMPUS WI-FI

eduroam

Students, faculty and staff use eduroam Wi-Fi on campus.

You can connect to eduroam in on-campus buildings and around the CSUF outdoor areas, including the Quad, Titan Walk, and in various-Parking Structures. You can also connect to eduroam and access Wi-Fi at any other participating institution, globally.

Connect to eduroam by using your CSUF email address and domain password (see below).

CONNECT TO eduroam

1. Connect to **CSUF-zGuests** and go to **wireless.fullerton.edu**
2. Tap on eduroam and agree to the terms. Select **Wizard Setup**
3. Select **CSUF Student** or **CSUF Faculty/Staff** and login

Username: Your full campus email

Students - **tuffy.titan@csu.fullerton.edu**

Faculty/Staff - **tuffy.titan@fullerton.edu**

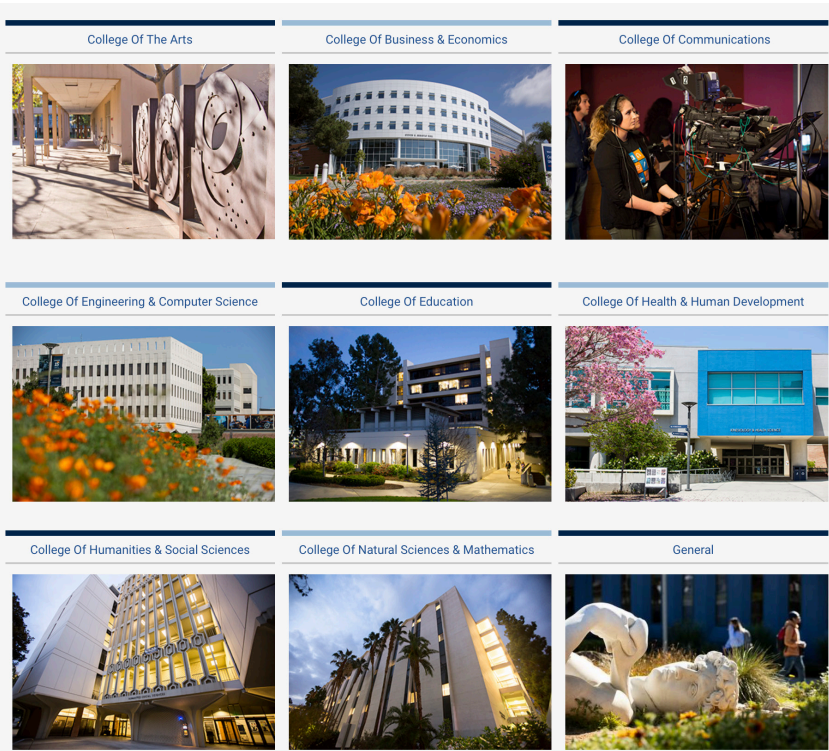
Password: Your CSUF Portal password

For more detailed instructions and to view Wi-Fi hotspots on campus, visit wireless.fullerton.edu



VIRTUAL LABS

Connect to high performance computers and access specialized software through the Virtual Labs. These virtual computer labs help faculty, staff and students utilize necessary software remotely. You can use a Mac or Windows computer to connect. Search by your college and select the virtual lab that hosts the software you want to use.



Connect to Splashtop and AWS App Stream to access these solutions, virtually:

- Adobe CC
- AutoCAD
- Maya
- R
- SolidWorks
- ToomBoom
- and More!

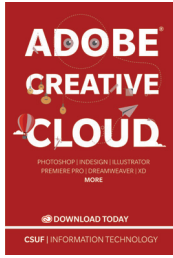
Visit it.fullerton.edu/virtual-labs



DOWNLOAD SOFTWARE



AWS Educate



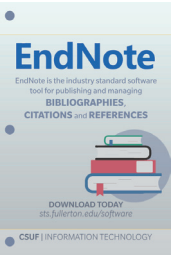
ADOBE CC



AUTODESK



DROPBOX



ENDNOTE



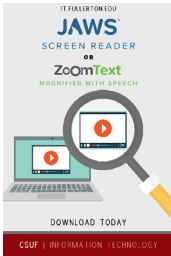
GOREACT



GRAMMARLY



INTELLECTUS STATISTICS



JAWS AND ZOOMTEXT



KURZWEIL 3000



LINKEDIN LEARNING



MATLAB



MATHEMATICA



NVIVO



OFFICE 365



PITCH VANTAGE



PROCTORIO



QUALTRICS



RGUROO



SPSS



SOLIDWORKS



TABLEAU



VMOCK



VOICETHREAD



WINDOWS

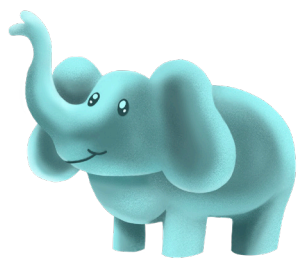
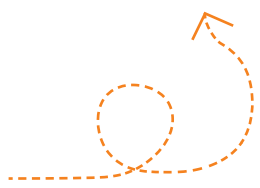


ZOOM



View all available software

Visit it.fullerton.edu and select the 'Software' tab



? TECH SUPPORT

STUDENT GENIUS CENTER

Students can stop by the Student Genius Center (SGC) on the first floor of Pollak Library, North for technical assistance.

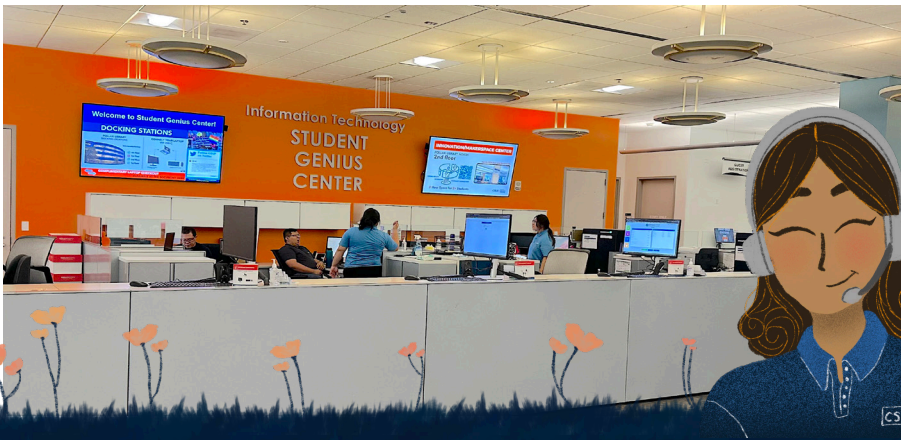
Smart Group Study

Who can check out the rooms?

Currently enrolled CSUF students, with no holds, can check out a Smart Group Study Room. Rooms are reserved for groups of two or more students.

Email: SGC@fullerton.edu

For hours and more information, visit sts.fullerton.edu/sgc



CSUF IT HELP DESK FOR STUDENTS

Call, email, or chat with the CSUF IT Help Desk to get any campus related technology support you may need.

Call: 657.278.8888

Email: StudentITHelpDesk@fullerton.edu

Chat: via Portal, click
Online IT Help

For Faculty & Staff

ACADEMIC TECHNOLOGY CENTER

The Academic Technology Center (ATC) is here to assist Faculty and Staff with their Technology needs.

Some services the ATC provides technology support for include:

- ATI (Accessible Technology Initiative)
- RTP (Retention, Tenure & Promotion) Portfolios
- Canvas
- Technology Questions & Mobile Device Support
- Password Reset
- VPN (Virtual Private Networks) Setup
- Classroom Technology Demo
- Software support

Stop by the ATC with any technology questions during our walk-in hours at PLS-237 from 8:00am – 5:00pm, Monday – Friday.

Email: ATC@fullerton.edu

For hours and more information, visit it.fullerton.edu/services/atc



TITANS

CSUF IT HELP DESK FOR FACULTY/STAFF

Call, email, or chat with the CSUF IT Help Desk to get any campus related technology support you may need.

Call: 657.278.7777

Email: HelpDesk@fullerton.edu

Chat: via Portal, click
Online IT Help



CSUF IT MOBILE APPS

Available through the Apple App and Google Play Stores

iFullerton

- Look up locations with the campus map
- Look at your class schedule
- Check parking availability
- Reserve smart group study rooms in Pollak Library
- Access Titan Mobile (register for classes, search courses, make tuition payments, view grades, etc.)



iTuffy Chatbot

- Check your class and finals schedule
- Look up your Campus-Wide ID (CWID)
- Get directions and find operating hours for campus offices and services
- Learn about upcoming events
- Search the campus directory

Navigate Student

- Schedule advising appointments
- Review your class schedule
- Receive messages
- View to-dos
- Virtually meet with other students with the study buddy feature

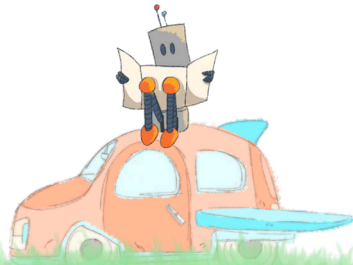




TITAN DIRECT ACCESS

Titan Direct Access program allows students immediate access to their course materials, in digital format, by the first day of classes. All students, in courses where Titan Direct Access is offered, will have free digital access to the specified course materials for the first two weeks of class. In order to maintain digital access, students must remain opted-in for the course materials through the CSUF Portal and pay their invoice once billed for the materials. Students will be charged for their materials the first week of class unless they choose to Opt-Out. Visit the Titan Shop website for more information.

For more information visit
www.titanshops.com/faq



CONTACT US

For more information on our specific services, please visit it.fullerton.edu

Student IT Help Desk

Call: 657.278.8888

StudentITHelpDesk@fullerton.edu

Chat: Via the Portal, Online IT Help

Student Genius Center (walk-in)

First Floor, Pollak Library North

TitanCard (walk-in)

First Floor, Pollak Library South

Call: 657.278.3555

titancard@fullerton.edu

Faculty/Staff IT Help Desk

Call: 657.278.7777

HelpDesk@fullerton.edu

Chat: Via the Portal, Online IT Help

Academic Technology Center (walk-in)

Second Floor, Pollak Library South

Call: 657.278.4050

ATC@fullerton.edu

CEDA (walk-in)

Second Floor, Pollak Library North

Call: 657.278.CEDA (2332)

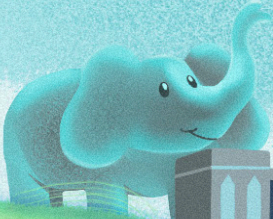
CEDA@fullerton.edu

DPS (walk-in)

Second Floor, Pollak Library North

Call: 657.278.3964

DPS@fullerton.edu



TITANS